

# LEPARI



*at a* **GLANCE**



# VISION

*A world free of* **HUNGER** *and* **MALNUTRITION**

# MISSION

To provide research-based policy solutions that sustainably reduce poverty and end hunger and malnutrition.



# *What is* **FOOD POLICY?**



**“FOOD POLICY”** refers to the collection of decisions made by governments, civil society, businesses, and international organizations that shape our food systems, including production, processing, distribution, and consumption of food.



# *What* WE DO



**IFPRI'S RESEARCHERS** provide policymakers, donors, civil society, the private sector, and farmer organizations with rigorous, policy-relevant research.

**IFPRI RESEARCHERS ANSWER QUESTIONS SUCH AS:**

*What policies help farmers manage scarce resources more sustainably?*

*What investments can support lifelong nutrition and good health for rural and urban populations?*

*How can agricultural growth and rural development be made more equitable and inclusive?*

# *Our research* **STRATEGY**

**IN THIS COMPLEX AND FAST-CHANGING WORLD,** IFPRI's strategy focuses on five key research areas essential to addressing poverty, hunger, and malnutrition in the face of new challenges. All IFPRI's research work takes gender into account.



# *Our research* **STRATEGY**

**IN THIS COMPLEX AND FAST-CHANGING WORLD,** IFPRI's strategy focuses on five key research areas essential to addressing poverty, hunger, and malnutrition in the face of new challenges. All IFPRI's research work takes gender into account.



# *Our research* **STRATEGY**

**IN THIS COMPLEX AND FAST-CHANGING WORLD,** IFPRI's strategy focuses on five key research areas essential to addressing poverty, hunger, and malnutrition in the face of new challenges. All IFPRI's research work takes gender into account.



# *Our research* **STRATEGY**

**IN THIS COMPLEX AND FAST-CHANGING WORLD,** IFPRI's strategy focuses on five key research areas essential to addressing poverty, hunger, and malnutrition in the face of new challenges. All IFPRI's research work takes gender into account.





# *Our research* **STRATEGY**

**IN THIS COMPLEX AND FAST-CHANGING WORLD,** IFPRI's strategy focuses on five key research areas essential to addressing poverty, hunger, and malnutrition in the face of new challenges. All IFPRI's research work takes gender into account.



# *Our research* **STRATEGY**

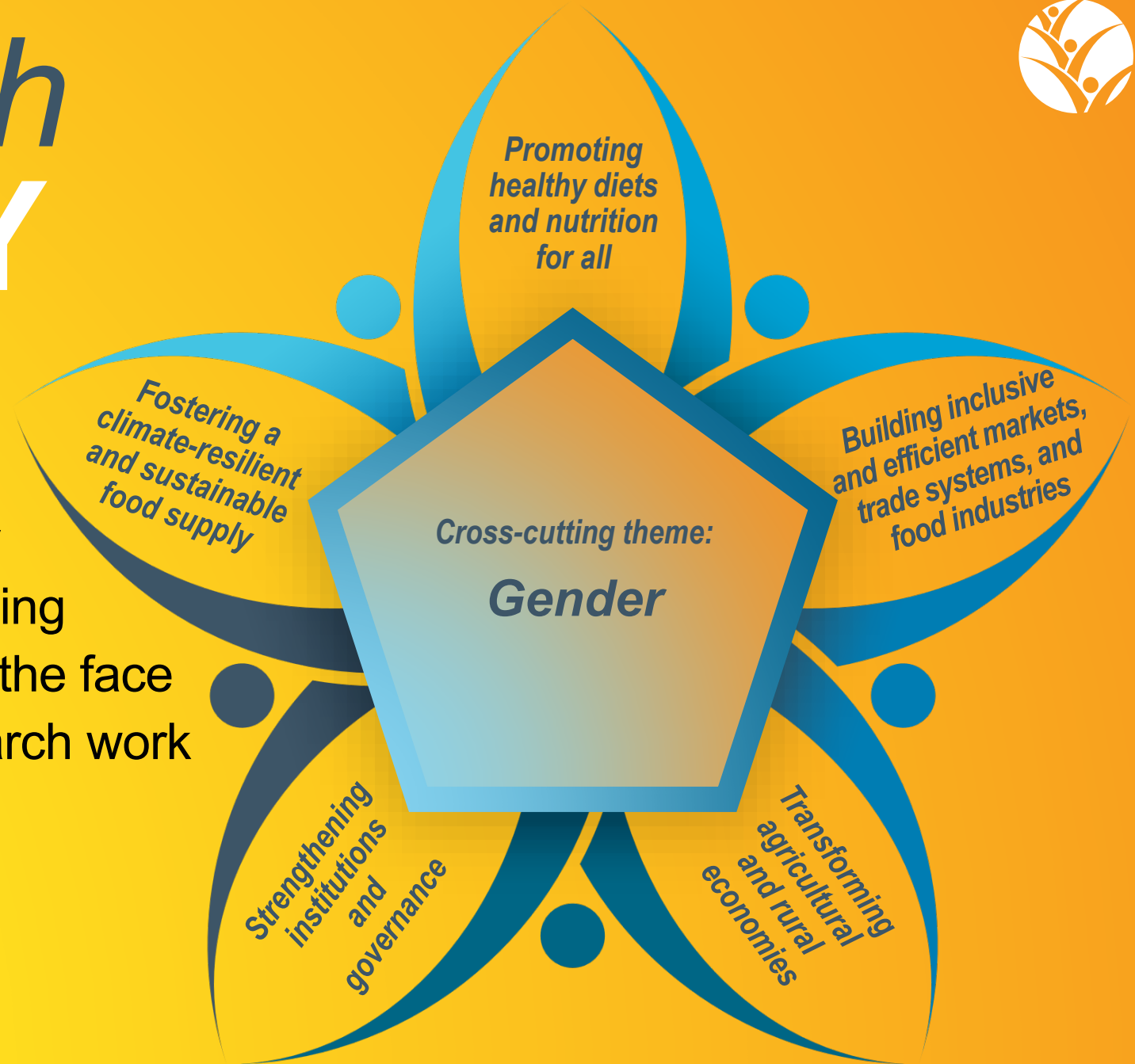
**IN THIS COMPLEX AND FAST-CHANGING WORLD,** IFPRI's strategy focuses on five key research areas essential to addressing poverty, hunger, and malnutrition in the face of new challenges. All IFPRI's research work takes gender into account.





# *Our research* **STRATEGY**

**IN THIS COMPLEX AND FAST-CHANGING WORLD,** IFPRI's strategy focuses on five key research areas essential to addressing poverty, hunger, and malnutrition in the face of new challenges. All IFPRI's research work takes gender into account.



# *IFPRI and* SUSTAINABLE DEVELOPMENT GOALS



OUR WORK ADDRESSES SEVERAL SUSTAINABLE DEVELOPMENT GOALS DIRECTLY...

**1** NO POVERTY



**2** ZERO HUNGER



**5** GENDER EQUALITY



**8** DECENT WORK AND ECONOMIC GROWTH



**15** LIFE ON LAND





# *IFPRI and* SUSTAINABLE DEVELOPMENT GOALS



...AND CONTRIBUTES TO MANY OTHERS.





# *What are the* **CHALLENGES** *to* *global food security?*

**GLOBAL, REGIONAL, AND NATIONAL FOOD SYSTEMS**  
face major challenges and require fundamental transformation  
to meet our food needs sustainably.

# 1 MALNUTRITION



**2 BILLION**

*people  
lack key micronutrients  
like iron and vitamin A*

**149 MILLION**

*children  
are  
stunted*

**45 MILLION**

*children  
are  
wasted*

**2 BILLION**

*adults  
are  
overweight or obese*

**39 MILLION**

*children  
are  
overweight*

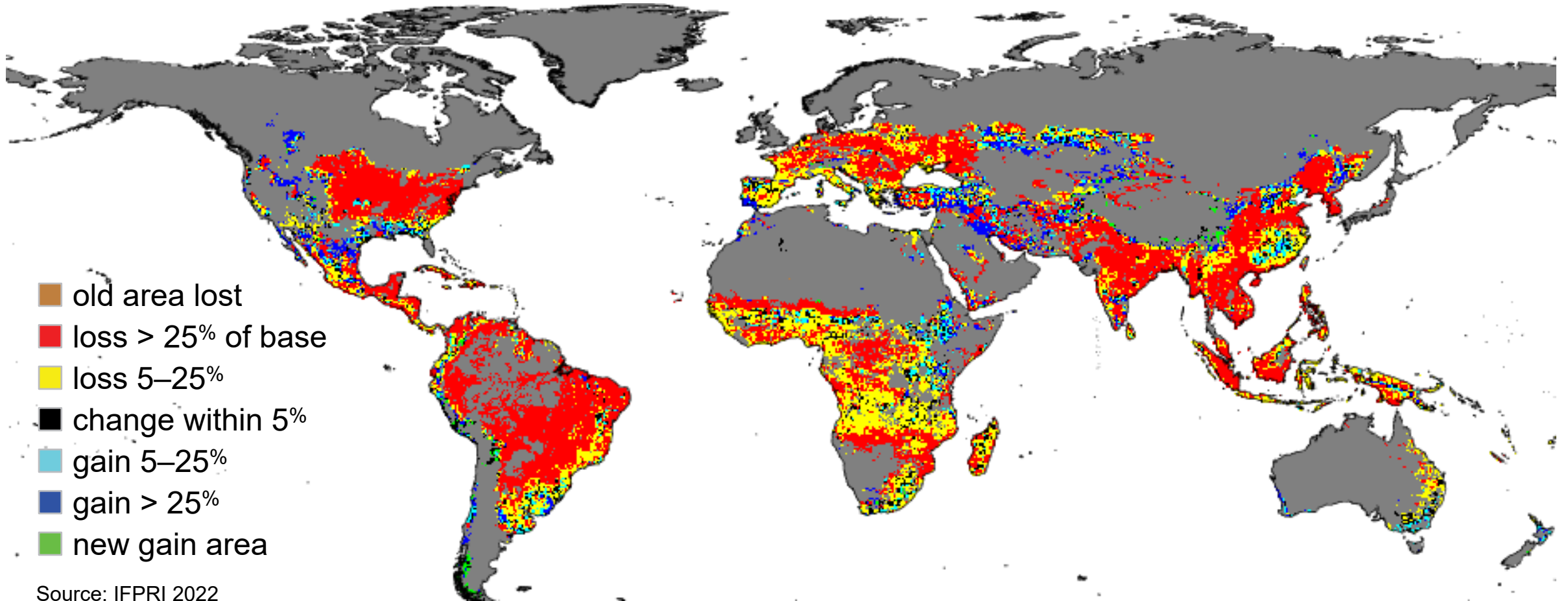
**88 PERCENT**

*of countries experience  
more than one form of  
malnutrition*

## 2 CLIMATE CHANGE



### PROJECTED 2050 GLOBAL MAIZE YIELDS WITHOUT ADAPTATION



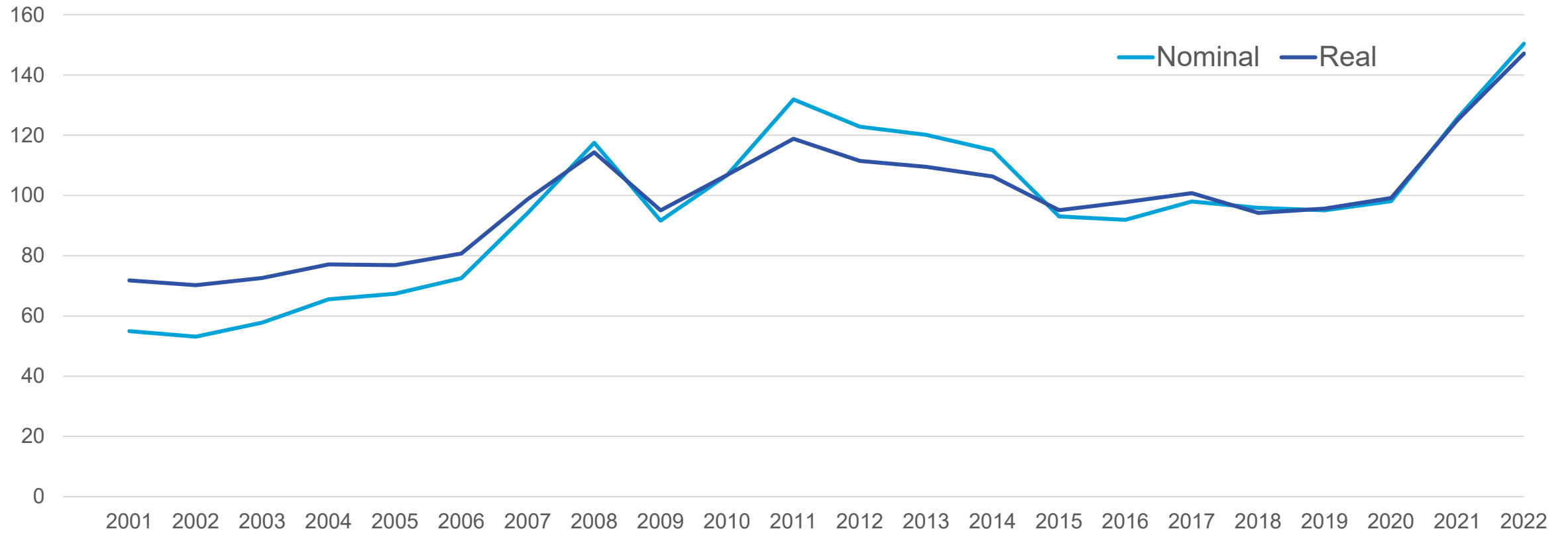
Source: IFPRI 2022



# 3 RISING FOOD PRICES



## FOOD PRICE INDEX



Source: FAO Food Prices Index 2022

# 4 FORCED MIGRATION



2009



43.3 MILLION

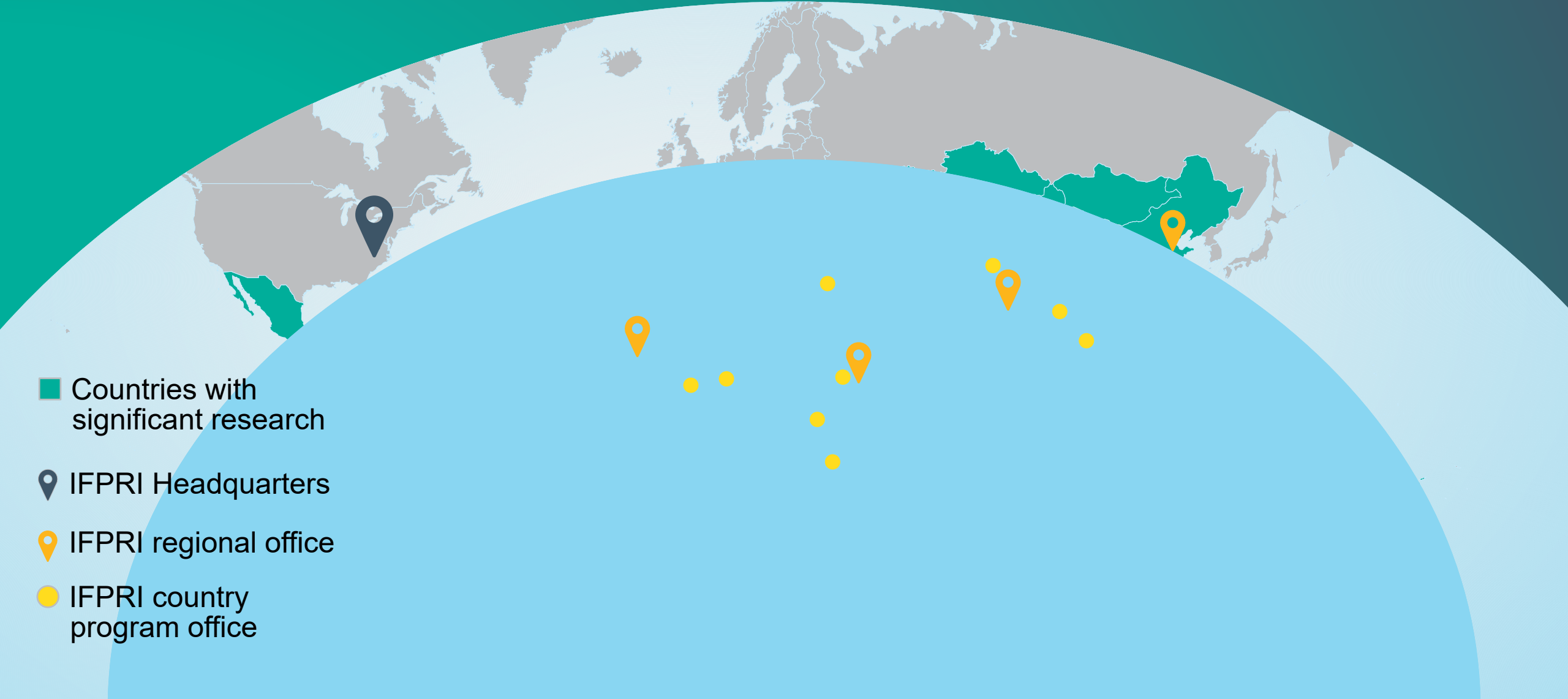
2021



89.3 MILLION

Source: UNHCR 2022

# Where WE WORK



■ Countries with significant research

📍 IFPRI Headquarters

📍 IFPRI regional office

● IFPRI country program office

# *Who* WE ARE



OUR STAFF COME FROM 61 COUNTRIES AROUND THE WORLD.







# Who WE ARE

## IFPRI Board of Trustees

**Director General, IFPRI**  
Johan Swinnen

**Food and Nutrition Policy**  
Purnima Menon

**Transformation Strategies**  
Channing Arndt

**Markets, Trade, and Institutions**  
Rob Vos

**Development Strategies and Governance**  
Paul Dorosh

**Nutrition, Diets, and Health**  
Deanna Olney

**Foresight and Policy Modeling**  
James Thurlow

**Poverty, Gender, and Inclusion**  
Dan Gilligan

**Innovation Policy and Scaling**  
David Spielman

**Natural Resources and Resilience**  
Claudia Ringler

**Africa\***  
Samuel Benin

**Latin America and  
the Caribbean\***  
Valeria Piñeiro

**South Asia\***  
Shahidur Rashid

**Country  
Offices\***

**Communications and  
Public Affairs**  
Charlotte Hebebrand

**Finance and  
Administration**  
James Fields

**Human Resources**  
Monica Dourado

**Business  
Development**  
Teunis van Rheenen

*\*IFPRI's Regional and Country Offices are staffed by researchers from multiple units*

# *IFPRI and* CGIAR



**IFPRI IS A RESEARCH CENTER OF CGIAR**, the world's largest global agricultural innovation network, and pursues many of its core themes jointly through a new portfolio of large-scale CGIAR Research Initiatives.

These Initiatives leverage synergies across CGIAR, working through five major impact areas, to advance our joint mission of transforming food systems for a sustainable, climate-resilient world free from hunger and malnutrition.



# *Sharing our* RESEARCH



## IFPRI WORKS WITH PARTNERS

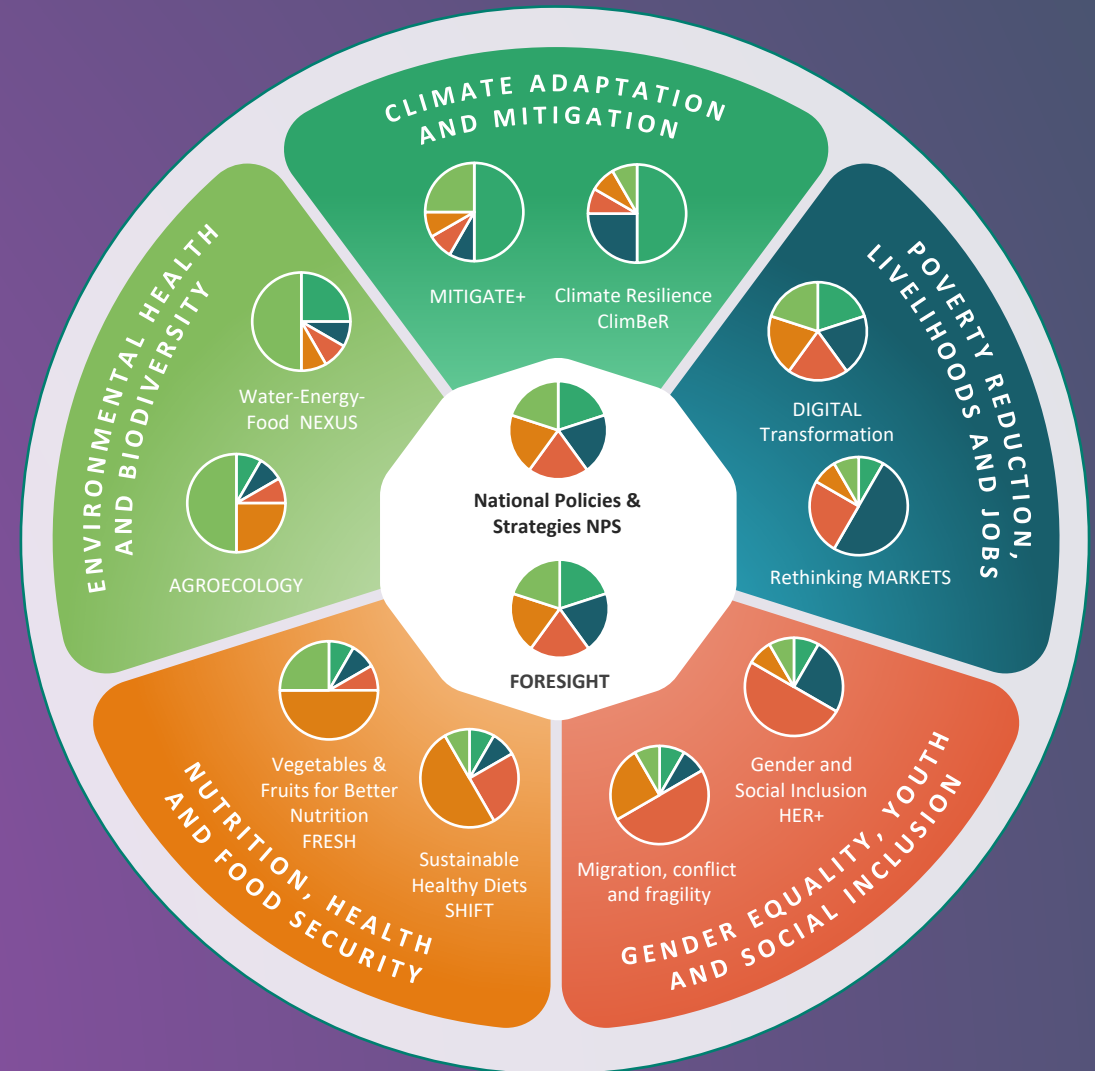
including governments, multilateral organizations, civil society, the private sector, and universities and research institutions, as well as across CGIAR, to inform and enhance the impact of its research.

Research results and products are shared through our web site, publications, social media, open access data sets, analytical models and tools, videos, web platforms, seminars, and training and capacity building.



# CGIAR Research Initiatives

led and co-led by IFPRI support policy and institutional solutions for systems transformation







# *How IFPRI makes a* **DIFFERENCE**

IFPRI'S WORK CONTRIBUTES TO:



**INVESTING IN SOCIAL  
PROTECTION**



**INCREASING ACCESS  
TO NUTRITION**



**IMPROVING FOOD  
SECURITY PROGRAMS**



**SCALING UP PRO-  
POOR INVESTMENTS**



# *How IFPRI makes a* **DIFFERENCE**

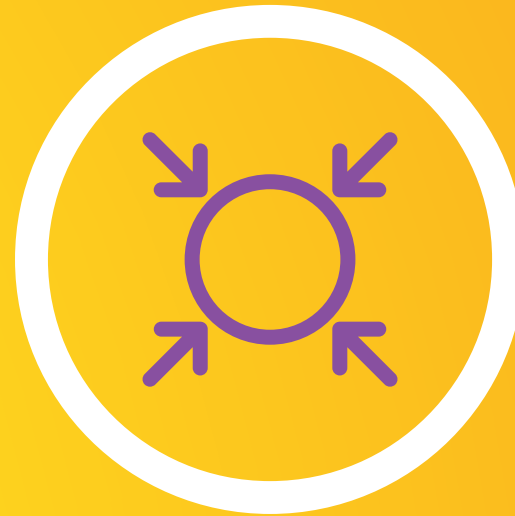
IFPRI'S WORK CONTRIBUTES TO:



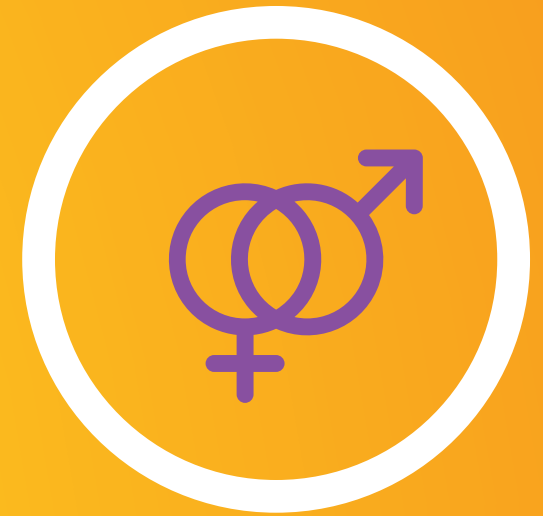
**SUPPORTING  
AGRICULTURAL  
TRANSFORMATION**



**IMPROVING ACCESS  
TO MARKETS**



**FACILITATING INCLUSIVE  
TRADE SYSTEMS**



**INCORPORATING  
GENDER INTO RESEARCH  
AND POLICY**



# *How IFPRI makes a* **DIFFERENCE**

IFPRI'S WORK CONTRIBUTES TO:



**PROMOTING  
SUSTAINABILITY**



**ENHANCING  
RESILIENCE**



**INFORMING INSTITUTIONAL  
DEVELOPMENT**



**STRENGTHENING  
CAPACITY**



# *How IFPRI makes a* **DIFFERENCE**



*Investing in social protection*



*Increasing access to nutrition*



*Improving food security programs*



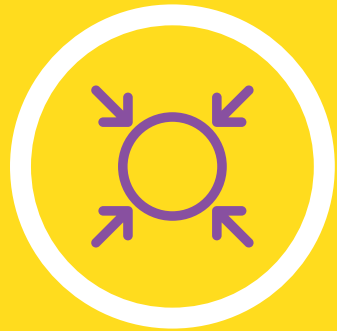
*Scaling up pro-poor investments*



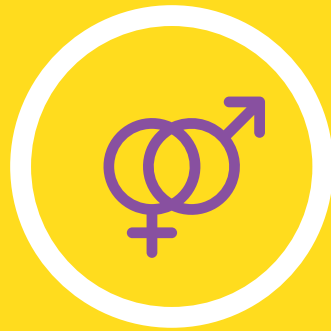
*Supporting agricultural transformation*



*Improving access to markets*



*Facilitating inclusive trade systems*



*Incorporating gender into research and policy*



*Promoting sustainability*



*Enhancing resilience*



*Informing institutional development*



*Strengthening capacity*



INTERNATIONAL  
FOOD POLICY  
RESEARCH  
INSTITUTE

**IFPRI**

*A world free of hunger and malnutrition*

**IFPRI is a CGIAR Research Center**



[www.ifpri.org](http://www.ifpri.org)



[www.ifpri.info](http://www.ifpri.info)



[ifpri@cgiar.org](mailto:ifpri@cgiar.org)